

## Bringing Two Vital Technologies Together



Tecnom's PLANT™ Technical Training Platform is revolutionizing systems training with advanced technologies such as:

- Advanced technologies to simplify the training process.
- A single tool which makes storing, retrieving and revising documents easier and more efficient.
- Virtual Reality
- Keep trainees engaged with interactive visual aids and a single, authoritative source for drawings and documents.
- Technical data mining and reuse from existing corporate databases.

VISION™ will integrate the development process with PLANT™ authoring capabilities and connect PLANT™ directly to the SAT foundation of your accredited training programs:

- Link PLANT™ material to any appropriate objective and exam in the program as well as tasks and qualification standards for rapid deployment.
- Deliver VR, 3-D and simulation based on PLANT™ materials from the VISION™ Learning Station.
- Hands on task-based training, on-line qualification, and just-in-time performance support.

## The Time To Innovate Is Now

Accelerant Solutions deep, in-plant experience, proficiency in PLANT™, and knowledge of VISION™ at numerous sites makes us the perfect nexus to bring these important products together based on use cases that maximize the benefits of this powerful new technology.

## Bringing Two Vital Technologies Together

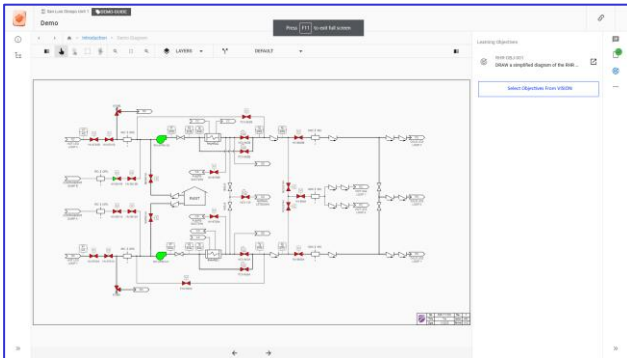
**PLANT™-VISION™ integration efforts focus on a variety of use-cases. Here are a few early examples:**

1. Allow the development of objective-based content oriented from VISION™, utilizing the content development capabilities in PLANT™.



John is in VISION™ on a Terminal Objective. He wants to add content to that objective in VISION™ using PLANT™ state-of-the-art tools. He clicks a button in VISION™ that launches the PLANT™ Content Authoring Tool in his web browser. That content will then be connected to the Objective in VISION™ once he saves it.

2. Allow the development of objective-based content oriented from PLANT™ while connected to selected objectives in VISION™.



Laura is in PLANT™ and wants to develop a Lesson Plan using the PLANT™ tools while connected to the appropriate objective(s) in her VISION™ SAT database. While in a Lesson Plan in PLANT™, she clicks the button “Access VISION™ Objectives”. A pop-up helps her choose the objective in VISION™ to which she wants to link the PLANT™ content. She clicks done and now proceeds to develop the content in PLANT™, knowing it is connected to the right objective.

3. Enable the VISION™ Learning Station (VLS) to bring PLANT™ content directly to the workforce in a variety of settings, all connected to the VISION™ SAT database.



Fred is preparing for training on a Performance Objective (Task) normally requiring hands on access to the containment area. He goes to the learning event assigned to him in VISION™ Learning Station (VLS). The VLS presents the environment “virtually” from the PLANT™ material. A real-world, hi-fidelity experience, done from his bedroom!